

Updated Molding Book

We have updated the stock status and the molding profiles in our revised molding catalog.

[Click Here to Download](#)

Allegion News

Schlage New Price

In effect Aug. 12th

[Click here for a PDF price book](#)

Please [alert](#) your salesman or our office if you would like a paper version.

Fusion Closing:

After an in-depth review of the Fusion business and its operations, Schlage has



#1 Quality Rating - 2017 Builder Brand Use Study

HB&G has [updated their product testing](#) to comply with changes to the Building Codes (IBC/IRC) and to the Acceptance Criteria for Fiberglass Columns. The 2 major changes that impacted PermaCast® and PermaLite® were:

- Eccentric Axial Loading – the new maximum allowable load values are based on eccentric (offset) axial load as opposed to concentric (centered) axial loading.
- Increased Safety Factor – the safety factor on the allowable load was increased from 2.5 times to 5 times

Eccentric (offset) loading of columns is not recommended by HB&G.

HB&G recommends following the installation instructions included with the product purchased. HB&G structural products conform to 2015, 2012, and 2009 IBC/IRC.

HB&G Building Products is the only fiberglass column manufacturer with an evaluation service report from ICC attesting to its compliance to the 2015, 2012, and 2009 IBC/IRC and Florida Product Approval (ESR-1361).

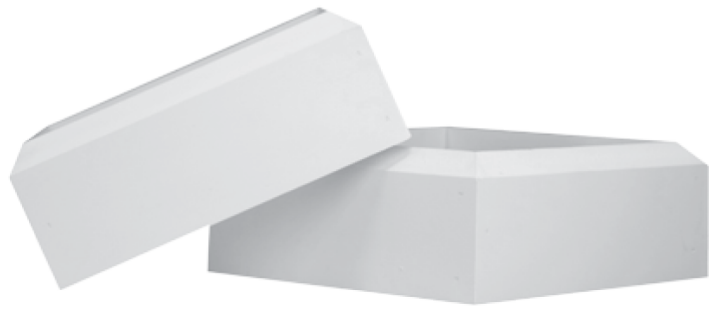
concluded that stopping operations is in the best interest of Allegion's Americas business region. Fusion customers will have 30 days to place their final orders. They expect to stop accepting new orders on Friday, September 8th, 2017.

Contact Us:

info@bbwood.com
PH 216-292-6555
Fax 216-292-6584

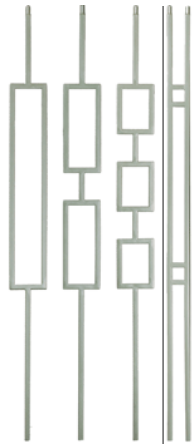
Our websites:

bbwood.com
Stairtrends.com
Stair Artist



Beveled Cap & Base Options for Square Columns

Want a more contemporary appearance? Beveled cap and base sets for square PermaCast® and PermaLite® columns deliver the look you need to set a home's curb appeal apart from the rest. Durable and easy to install, beveled cap and bases are lightweight, low maintenance, and are available in 6, 8, 10, and 12" sizes.



StairTrends - Now Offering

Twist & Basket Series in

Ash Gray

in addition to our modern collection
pictured on the left

Copyright © 2017 B&B Wood Products, INC, All rights reserved.

Our mailing address is:

B&B Wood Products, INC
26301 Richmond road
Bedford, Oh 44146

[Add us to your address book](#)