

# ROUND WOOD COLUMNS

## COLUMN DIMENSIONS (IN INCHES)

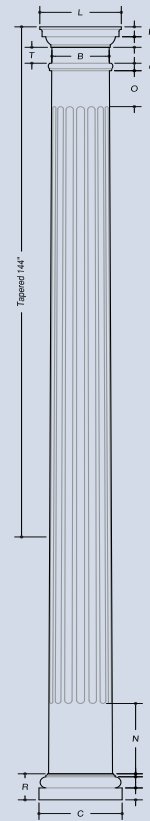
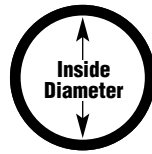
COL. SIZE	A	B	C	D	E	F	G	J	K	L	O	N	R	T	LENGTHS AVAIL. (ft)
6"	5 <sup>5</sup> / <sub>8</sub> "	4 <sup>5</sup> / <sub>8</sub> "	7 <sup>1</sup> / <sub>4</sub> "	1 <sup>3</sup> / <sub>8</sub> "	1 <sup>1</sup> / <sub>4</sub> "	5 <sup>1</sup> / <sub>8</sub> "	1 <sup>5</sup> / <sub>16</sub> "	1 <sup>1</sup> / <sub>16</sub> "	1 <sup>1</sup> / <sub>16</sub> "	7"	4 <sup>1</sup> / <sub>2</sub> "	8"	3 <sup>3</sup> / <sub>16</sub> "	2"	8,10
8"	7"	6 <sup>1</sup> / <sub>4</sub> "	9 <sup>1</sup> / <sub>4</sub> "	1 <sup>1</sup> / <sub>2</sub> "	1 <sup>1</sup> / <sub>4</sub> "	3 <sup>3</sup> / <sub>4</sub> "	1 <sup>5</sup> / <sub>16</sub> "	1 <sup>1</sup> / <sub>4</sub> "	1 <sup>1</sup> / <sub>4</sub> "	8 <sup>5</sup> / <sub>8</sub> "	4 <sup>1</sup> / <sub>2</sub> "	8"	3 <sup>1</sup> / <sub>4</sub> "	2"	8,10,12
10"	9"	8 <sup>1</sup> / <sub>4</sub> "	11 <sup>1</sup> / <sub>4</sub> "	1 <sup>1</sup> / <sub>2</sub> "	1 <sup>1</sup> / <sub>4</sub> "	3 <sup>3</sup> / <sub>4</sub> "	1 <sup>5</sup> / <sub>16</sub> "	1 <sup>1</sup> / <sub>4</sub> "	1 <sup>1</sup> / <sub>16</sub> "	10 <sup>1</sup> / <sub>2</sub> "	4 <sup>1</sup> / <sub>2</sub> "	8"	3 <sup>1</sup> / <sub>4</sub> "	2"	8,10,12
12"	11 <sup>3</sup> / <sub>8</sub> "	9 <sup>3</sup> / <sub>8</sub> "	13 <sup>3</sup> / <sub>8</sub> "	1 <sup>3</sup> / <sub>8</sub> "	1 <sup>1</sup> / <sub>4</sub> "	7 <sup>7</sup> / <sub>8</sub> "	1 <sup>5</sup> / <sub>16</sub> "	1 <sup>3</sup> / <sub>4</sub> "	1 <sup>3</sup> / <sub>8</sub> "	12"	4 <sup>1</sup> / <sub>2</sub> "	8"	3 <sup>1</sup> / <sub>8</sub> "	2"	8, 10, 12

Larger sizes available. Call for quote.

## ROUND WOOD INSIDE DIMENSIONS

Inside diameter may vary up to 1/4".  
Splitting a column will decrease inside dimension 1/8".

COL. DIA.	TOP I.D.	BOT I.D.
6"	3 <sup>1</sup> / <sub>8</sub> "	3 <sup>1</sup> / <sub>8</sub> "
8"	4 <sup>3</sup> / <sub>8</sub> "	4 <sup>3</sup> / <sub>8</sub> "
10"	6 <sup>3</sup> / <sub>4</sub> "	6 <sup>3</sup> / <sub>4</sub> "
12"	7 <sup>1</sup> / <sub>8</sub> "	9 <sup>3</sup> / <sub>8</sub> "



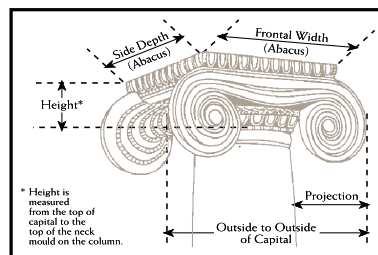
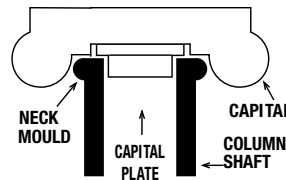
## CAPITALS AND BASES FOR WOOD COLUMNS

### CAPITAL DIMENSIONS FOR ROUND COLUMNS (IN INCHES)

Size of Columns (Diameter at bottom of shaft)		8"	10"	12"
		ROUND	ROUND	ROUND
Roman Ionic	Height	3 <sup>5</sup> / <sub>16</sub> "	4"	4 <sup>5</sup> / <sub>8</sub> "
	Abacus	8 <sup>1</sup> / <sub>8</sub> "	10 <sup>3</sup> / <sub>4</sub> "	12 <sup>1</sup> / <sub>2</sub> "
	Projection	3 <sup>1</sup> / <sub>8</sub> "	4 <sup>1</sup> / <sub>8</sub> "	5"
	O/S to O/S	10 <sup>1</sup> / <sub>2</sub> "	13 <sup>9</sup> / <sub>16</sub> "	16 <sup>1</sup> / <sub>2</sub> "
Greek Ionic	Height	4 <sup>1</sup> / <sub>8</sub> "	5 <sup>5</sup> / <sub>8</sub> "	6 <sup>9</sup> / <sub>16</sub> "
	Abacus	7 <sup>5</sup> / <sub>16</sub> "	10 <sup>11</sup> / <sub>16</sub> "	14 <sup>3</sup> / <sub>8</sub> "
	Projection	3 <sup>5</sup> / <sub>8</sub> "	5"	7 <sup>1</sup> / <sub>2</sub> "
	O/S to O/S	11 <sup>7</sup> / <sub>8</sub> "	14 <sup>15</sup> / <sub>16</sub> "	20 <sup>11</sup> / <sub>16</sub> "
Temple of the Winds	Height	8"	10 <sup>5</sup> / <sub>16</sub> "	11 <sup>5</sup> / <sub>8</sub> "
	Abacus	11 <sup>7</sup> / <sub>8</sub> "	13 <sup>7</sup> / <sub>16</sub> "	16 <sup>9</sup> / <sub>16</sub> "
	Projection	5 <sup>1</sup> / <sub>2</sub> "	6"	7"
	O/S to O/S	11 <sup>7</sup> / <sub>8</sub> "	13 <sup>7</sup> / <sub>16</sub> "	16 <sup>9</sup> / <sub>16</sub> "
Roman Corinthian	Height	8 <sup>11</sup> / <sub>16</sub> "	11 <sup>15</sup> / <sub>16</sub> "	14 <sup>5</sup> / <sub>8</sub> "
	Abacus	12 <sup>1</sup> / <sub>16</sub> "	14 <sup>5</sup> / <sub>8</sub> "	18 <sup>7</sup> / <sub>8</sub> "
	Projection	4 <sup>1</sup> / <sub>4</sub> "	6 <sup>1</sup> / <sub>4</sub> "	8 <sup>1</sup> / <sub>4</sub> "
	O/S to O/S	12 <sup>1</sup> / <sub>16</sub> "	14 <sup>5</sup> / <sub>8</sub> "	18 <sup>7</sup> / <sub>8</sub> "
Samozi	Height	3 <sup>1</sup> / <sub>8</sub> "	4 <sup>1</sup> / <sub>8</sub> "	5 <sup>1</sup> / <sub>16</sub> "
	Abacus	9 <sup>7</sup> / <sub>8</sub> "	14 <sup>1</sup> / <sub>4</sub> "	16 <sup>5</sup> / <sub>8</sub> "
	Projection	3 <sup>3</sup> / <sub>8</sub> "	5 <sup>3</sup> / <sub>8</sub> "	6"
	O/S to O/S	10"	14 <sup>1</sup> / <sub>4</sub> "	16 <sup>5</sup> / <sub>8</sub> "

### 8" - 12" LOAD BEARING ORNAMENTAL CAPITALS FOR ROUND WOOD COLUMNS

Adding a load bearing ornamental capital to a round wood column will lengthen or shorten the overall height of the column depending on the height of the capital. Subtract the "T" dimension (from the column dimensions chart) and add the height of the ornamental capital +/- 1/4" for overall column height.

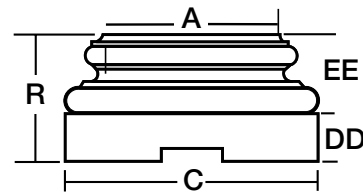


• 8"-12" Round Ornamental Capitals are load bearing.

# CAPITAL AND BASE OPTIONS

The same cap and base profiles offered in PermaCast® are also available for wood.

## ATTIC BASE



For columns 8" to 12" in diameter, bases, including plinth, are Polyurethane.

COLUMN SIZE	BOTTOM DIA. (NET)	ROUND BASE			
		C	DD	EE	R
6"*	CALL	CALL	CALL	CALL	CALL
8"	8 <sup>1</sup> / <sub>8</sub> "	10 <sup>1</sup> / <sub>4</sub> "	1 <sup>7</sup> / <sub>8</sub> "	3 <sup>1</sup> / <sub>4</sub> "	5 <sup>1</sup> / <sub>8</sub> "
10"	9 <sup>5</sup> / <sub>8</sub> "	13"	2 <sup>1</sup> / <sub>2</sub> "	4"	6 <sup>1</sup> / <sub>2</sub> "
12"	11 <sup>5</sup> / <sub>8</sub> "	16"	2 <sup>7</sup> / <sub>8</sub> "	4 <sup>5</sup> / <sub>8</sub> "	7 <sup>1</sup> / <sub>2</sub> "

Capitals and bases for wood columns are load bearing. The shaft fits between the capital and base and alters the height of the shaft. Several options are offered for wood columns.

## CLASSIC CAPITAL AND BASE

The Classic style is standard and best complements the wood column.

## ORNAMENTAL CAPITALS

Five styles of ornamental capitals are available. Nothing makes a statement like wood columns with an ornamental cap. 8"-12" ornamental capitals for Round wood columns are load bearing.

Using an ornamental capital with a wood shaft will alter the height of the shaft.

## ATTIC BASE

Attic bases are used for a more ornate look and comes in two pieces. (In the chart, see DD for the plinth dimension and EE for the torus dimension.)

## TIPS

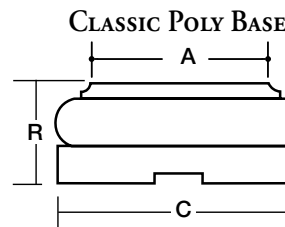
When ordering an ornamental cap order the appropriate base for the column.

Ornamental caps will lengthen or shorten the height of the column.

Ensure exact opening measurement prior to ordering column length.

## WHAT YOU NEED TO KNOW

- The height of a column includes capital and base (Ex. 8' = shaft 7' 6<sup>1</sup>/<sub>2</sub>" and capital and base total 8').
- Cap and base fit on top and bottom of column insulating the column from the elements.
- Split columns are not load bearing.
- For transportation purposes, small sections of split columns are left partially intact.
- Store columns in dry, well-ventilated area.
- For exterior applications: Paint inside of column shaft with a nonfibrous asphaltum type roof coating. Application must reach minimum 48" up the inside bottom of the column shaft.
- Wood columns require ventilation at the top and bottom.
- Failure to adhere to installation instructions voids the warranty.



## CLASSIC POLY CAP



## CLASSIC POLY CAP AND BASE DIMENSIONS

BASE	A	C	D	E	F	R	CAP	J	K	L
8"	7"	10 <sup>1</sup> / <sub>4</sub> "	1 <sup>7</sup> / <sub>8</sub> "	1 <sup>3</sup> / <sub>4</sub> "	5 <sup>8</sup> / <sub>16</sub> "	4 <sup>1</sup> / <sub>4</sub> "	8"	1 <sup>5</sup> / <sub>16</sub> "	1 <sup>5</sup> / <sub>16</sub> "	8 <sup>7</sup> / <sub>8</sub> "
10"	9"	12 <sup>7</sup> / <sub>8</sub> "	2 <sup>7</sup> / <sub>16</sub> "	2 <sup>1</sup> / <sub>8</sub> "	3 <sup>4</sup> / <sub>16</sub> "	5 <sup>5</sup> / <sub>16</sub> "	10"	1 <sup>1</sup> / <sub>4</sub> "	1 <sup>3</sup> / <sub>4</sub> "	10 <sup>3</sup> / <sub>8</sub> "
12"	11 <sup>5</sup> / <sub>8</sub> "	16"	2 <sup>7</sup> / <sub>8</sub> "	2 <sup>3</sup> / <sub>8</sub> "	7 <sup>8</sup> / <sub>16</sub> "	6 <sup>1</sup> / <sub>8</sub> "	12"	1 <sup>3</sup> / <sub>4</sub> "	2 <sup>1</sup> / <sub>16</sub> "	13 <sup>3</sup> / <sub>4</sub> "

## CUSTOM SPLITTING OPTIONS

